

# *High Performance Door Systems*



 **EGS International LLC**  
HIGH PERFORMANCE DOOR SYSTEMS

*The Standard of Excellence*

# *Atlantic Series Sliding Glass Doors*

## **GENERAL:**

EGS International, LLC Atlantic Series Sliding Glass Doors comply with AAMA/NWWDA 101/I.S. 2 – Voluntary Specifications for Aluminum, Vinyl (PVC) and Wood Windows and Glass Doors; ASTM E987 for deglazing, ASTM E547/E331 for water resistance; ASTM E 283 for air infiltration; FBC TAS 201 – Impact Test Procedures, Florida Building Code; FBC TAS 202 – Criteria for Testing Impact and Non-Impact Resistant Building Envelop Components Using Static Air Pressure, Florida Building Code; FBC TAS 203 – Criteria for Testing Products Subject to Cyclic Wind Pressure Loading, Florida Building Code; AAMA 1302.5 for Forced Entry Compliance; and is Miami-Dade Product Control approved. Door units are AAMA Grade: HC-130. Units are offered in standard and custom sizes, and various glass configurations. Please consult your salesperson for product design load ratings and ensure that your application conforms to local building codes and design pressures.

## **MATERIALS:**

Frame and panel components are constructed from commercial quality 6005-T5 aluminum alloy meeting ASTM B221/221M - Standard Specification for Aluminum and Aluminum Alloy Extruded Bars, Rods, Wire, Profiles, and Tubes.

## **GLASS:**

Door panels are designed to accommodate 9/16" (14mm); overall thickness of 0.504"(13mm); two lites of 1/4" (6mm) heat strengthened glass with 0.060" (1.5mm) PVB interlayer for Small Missile-Rated door units; 0.090" PVB interlayer for Large Missile-Rated door units. Small Missile-Rated door panels shall be channel glazed using a flexible vinyl glazing channel, glazing penetrating at least 0.625" (13mm) into rabbet, with exterior silicone sealant cap bead. Large Missile-Rated door units shall be channel glazed using flexible vinyl glazing channel, glazing penetrating at least 0.0625 (13mm) into rabbet, with interior and exterior Quarter Round Aluminum O-Gee trim applied to the perimeter of glazed panel with structural adhesive. Standard glass is clear. Obscure, Low-E or a variety of tinted glass colors are available. Consult your sales professional for more information.

Large Missile Design Windload : up to +105/-130 (See Design Load Chart)

Small Missile Design Windload : up to +130/-130 ( See Design Load Chart)

## **HARDWARE:**

Active door panels feature adjustable stainless steel wheels in aluminum housings with stainless steel rail cover on aluminum track. Rolling panels feature Adams-Rite 1847 Stainless Steel Deadlock with Classic Series Hardware.



### **FINISH:**

Standard finish is 215 R1 Class-1 clear anodized complying with AAMA 611 specifications or white and bronze painted PPG Duranar two coat 70% fluoropolymer resin – patented primer and durable color coat – complying with AAMA 2605 - Voluntary Specification, Performance Requirements and Test Procedures for Superior Performing Organic Coatings on Aluminum Coatings on Aluminum Extrusions and Panels; and ASCA 96 – Voluntary Specifications Aluminum Components; Architectural Spray Coatings Association. Premium colors include : Brick Red, Hartford Green, Beige, Sage Brown, Silversmith and Black. Custom colors are also available.

### **CONSTRUCTION:**

Panel corners shall be neatly fitted and securely fastened using stainless steel (18-8) fasteners and sealed with silicone sealant. Panel Interlock Stile material shall be 6005-T5 aluminum alloy filled with expanding urethane foam. Units shall be weatherstripped utilizing double row pile with integral plastic fin located at interlock stiles; double row pile with integral plastic fin located at frame jambs fixed panel track, exterior interlock stiles, on interior and exterior of female astegral adapter, and top and bottom rails. Steel reinforcement as required is to be 1-1/2" X 3" X 11ga structural steel tube, Hot Dip Galvanized.

### **SCREEN:**

Rolling screens are standard heavy-duty box-type with adjustable bottom rollers. The screen cloth is fiberglass 18"X 16" mesh, installed in an extruded aluminum section.

### **INSTALLATION:**

All doors are to be set in wall constructions in accordance with the manufacturer's installation instructions. Doors shall be installed square, plumb, and level without binding. Frame shall be adequately supported across its entire length without bowing or twisting. Manufacturer assumes no liability for damage by the trades or final cleaning of the unit.

Note: Specifications subject to change without notice.

# *Atlantic Series Sliding Glass Doors*

## **The Duranar Paint Finish Perhaps The Finest Painted Finish On Earth**

Choose From a Variety of Standard and Custom Finish Colors. EGS Atlantic Series Sliding Glass Doors feature a tough Duranar finish to compliment any color scheme. Standard colors are white and bronze. Premium colors include: Brick Red, Hartford Green, Beige, Sage Brown, Silversmith and Black. Custom colors are also available for large volume orders. Consult your sales professional for more information.

### **Standard Colors**



**White**

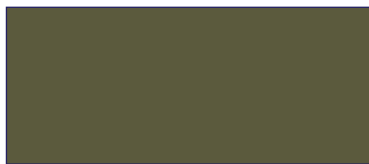


**Bronze**

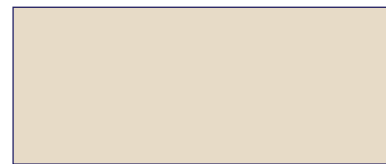
### **Premium Colors**



**Hartford Green**



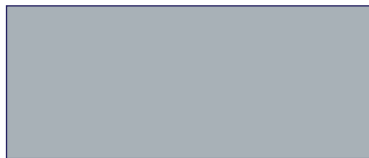
**Sage Brown**



**Beige**



**Brick Red**



**Silversmith**



**Black**

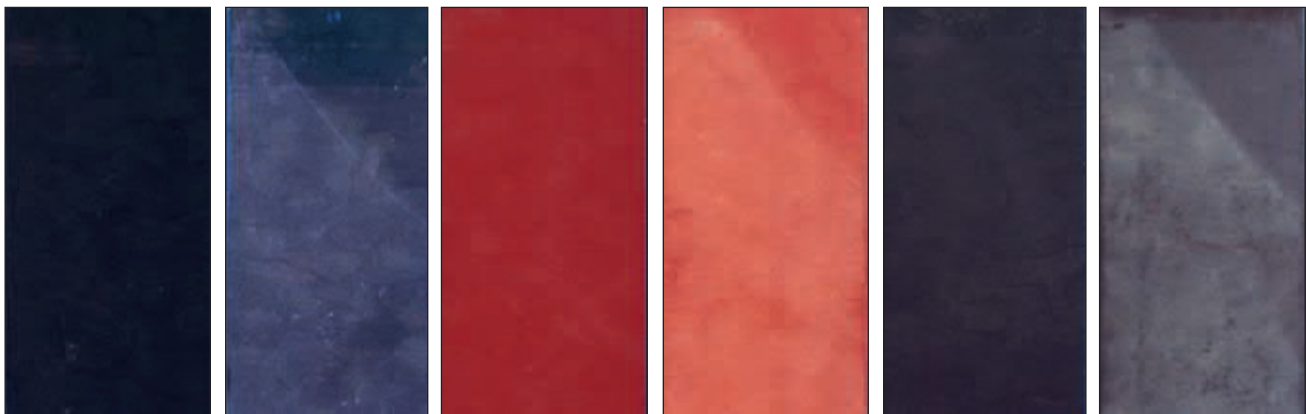


## The EGS Duranar Painted Finish System – Performance Tested for Superior Results

Duranar 70% fluoropolymer extrusion coatings are two coat systems consisting of a patented primer and a durable color coat. Duranar coatings are chemically inert, providing outstanding resistance against color and gloss fade, and environmental stress such as acid rain and ultraviolet attack. Our Duranar painted finish is highly resistant to chalking, chipping, and peeling; resists dirt collection and chemical staining; and can significantly reduce maintenance and restoration costs over time. And our painted Duranar finish exceeds the toughest industry specifications – AAMA 2605 – Voluntary Specification, Performance Requirements and Test Procedures for Superior Performing Organic Coatings and have been proven to be superior to standard painted finishes in tests conducted in the harsh Florida environment.

A Finish So Good, You Can See The Difference.

### 5 Years Florida Exposure



**PPG Duranar  
Finish**

**Standard  
Finish**

**PPG Duranar  
Finish**

**Standard  
Finish**

**PPG Duranar  
Finish**

**Standard  
Finish**

*Paint Finish and Color Options*

# Atlantic Series Sliding Glass Doors

- **Built to Withstand 25% More Windload Than Other's Base-Grade Doors.**

EGS's Atlantic Series Patio Doors are built to the highest standards to meet the toughest of the tough Florida Building Codes. From our massive double-hollow extrusions to our custom specified impact-resistant tempered glass, every part of our Patio Door is built to provide you and your family the greatest protection possible from the forces of Mother Nature.

- **Tough All Aluminum Construction.**

Aluminum is 43 times stronger than wood and over 30 times stronger than vinyl. And unlike other door materials, aluminum is impervious to the damaging effects of Florida's harsh climate. Aluminum will not rust, rot, split, warp, shrink or swell. Our aluminum door rails and frames are dimensionally stable and structurally strong. Our premium-grade 6005-T5 alloy aluminum extrusions ensure long-term ease of operation and a longer useful life. Our aluminum doors are impervious to insect damage. Unlike other door materials, aluminum is unaffected by insects such as termites and other organic parasites.



**Massive Double Hollow Extrusions**

- **Fully Weatherstripped for Peak Energy-Efficiency.**

All Atlantic Series Sliding Doors are double weatherstripped utilizing high-grade woolpile with integral plastic fin.

- **Beautiful by Design.**

From the aesthetically pleasing visual balance of the extrusion sightlines to the Bi-Parting Panel interlock design that eliminates unsightly center posts, each detail of our Atlantic Series Sliding Glass Doors have been designed to make your life more beautiful.

- **A Finish So Good, It's Guaranteed.**

Our Atlantic Series Patio Doors feature a PPG Duranar two coat 70% fluoropolymer resin finish that meets AAMA 2605 Specifications for Superior Performing Organic Coatings. Even under the toughest conditions, our Patented Duranar finish provides outstanding resistance against color and gloss fade, and environment stress such as acid rain, ultraviolet rays, corrosive chemicals and seacoast influences such as salt spray. A finish so good it comes with a full 10 year limited warranty. Consult your sales specialist for complete details on our Duranar Warranty.





- **The Ultimate in Home Security.**

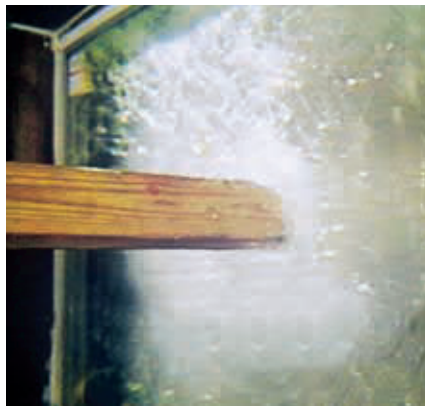
EGS's Atlantic Series Sliding Glass Doors secure your home 24 hours a day, 365 days a year. Standard doors are the easiest point of entry and the most common means of forced entry for an intruder. While standard doors shatter easily allowing entry, our doors can stand up to thieves to deliver peace of mind and a real sense of security for the entire family. All of our Atlantic Series Doors feature a premium 9/16" impact-resistant glazing system designed to provide the maximum protection against home invasion and meets or exceed all the stringent AAMA and Miami-Dade Forced Entry Codes.



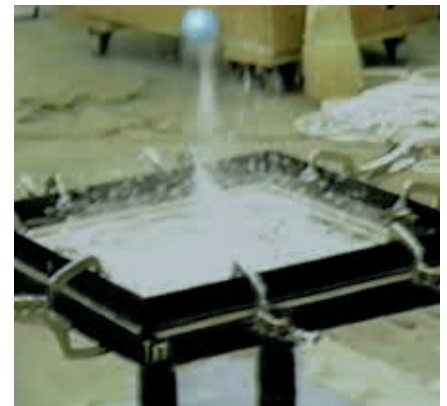
Impact-Resistant Glass.

gee  
onal).

Stainless Steel Panel Rollers and  
Stainless Steel Track Cap for smooth  
operation and extended life.



**Meets Large Missile and  
Small Missile Impact Codes**



**Meets Underwriters Laboratories  
UL 972 Burglary Resistant Tests**

- **Safe for Coastal Applications**

From our stainless steel panel assembly screws, marine glazed door panels, exposed fastener covers for the jambs, head and sill that can be sealed by the installer, to the use of galvanized steel reinforcement, when required, we have built our Atlantic Series Doors to eliminate corrosion caused by salt water intrusion. In addition, The Atlantic Series comes standard with high quality stainless steel roller assemblies to provide one-touch openings even under the harshest of conditions.

- **Conforms to the Toughest Building Codes.**

Our Atlantic Series Patio Doors meet or exceed the requirements of the current Florida Building Code and are Miami-Dade Approved.

# *Atlantic Series Sliding Glass Doors*

## **The Best Door On The Market Should Have The Best Hardware**

### **The Classic Series PVD Lifetime Finish Warranty**

The Ashland Hardware PVD lifetime finish warranty covers the original residential user of the PVD product as long as the original user occupies the residential premises upon which the product was originally installed. Upon return of a defective product to Ashland Hardware, Ashland Hardware shall supply a replacement product at no-charge for any product where the original finish of PVD has been identified as having failed. Replacement products will be shipped FOB to either the job site or the customer's factory.

A failure is considered when the product does not pass documented visual inspection criteria for tarnishing, pitting, and discoloring. The specifications to be used to determine are ASTM B537-70 Grade 80 for pitting and AES 500 for visual criteria. A finish deterioration occurring from the use of paints, solvents or other chemicals is not a defect in the finish and is not covered by this warranty.

Ashland's warranty is expressly limited to persons who purchase Ashland's manufactured products for the purpose of resale or use in the ordinary course of the buyer's business.

This warranty does not cover any product that has been improperly installed, altered, misused, abused, or used for a purpose other than that for which it was originally intended, or in a manner inconsistent with any instructions regarding its use. This warranty does not cover products used in commercial applications.

**THIS PVD COATING WARRANTY IS EXCLUSIVE AND ASHLAND HARDWARE MAKES NO OTHER WARRANTY OF ANY KIND WHATSOEVER, EXPRESSED OR IMPLIED, WITH RESPECT TO THE PVD COATING MANUFACTURED AND SOLD BY IT.**

#### **LEGAL LIMITATIONS:**

FOR PVD COATINGS, THERE IS NO OTHER EXPRESSED WARRANTY, AND ALL IMPLIED WARRANTIES, INCLUDING THOSE OF MERCHANT, ABILITY OR FITNESS FOR A PARTICULAR PURPOSE ARE HEREBY EXCLUDED. This is the exclusive remedy, and liability for incidental or consequential or punitive damages under any and all warranties are hereby excluded to the extent exclusion is permitted by law. Some states do not allow the exclusion or limitation of incidental or consequential or punitive damages, so the above limitations may not apply to you. This warranty gives you specific legal rights, and you may also have other rights which may vary from state to state.

The purpose of this remedy shall be to provide buyer with repair and replacement of products or parts manufactured by Ashland Hardware found to be defective in materials or workmanship or negligently manufactured. This exclusive remedy shall not be deemed to have failed of its essential purpose as long as Ashland Hardware is willing and able to repair or replace said defective products or parts in the prescribed manner.



## The Best Door On The Market Should Have The Best Hardware

Choose from a variety of hardware options to compliment your EGS Glass Sliding Door. No matter your choice, the EGS hardware will complement the style and the high standards that we put into every door unit we build.



**Classic**  
Bright Brass



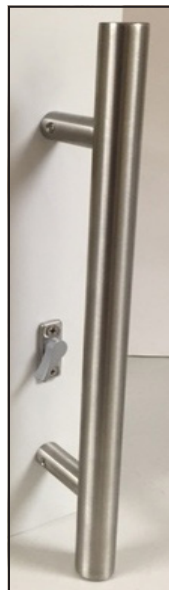
**Classic**  
Satin Nickel



**Expression**  
Satin Nickel



**Traditional**  
White



**Modern**  
Stainless Steel



**Contemporary**  
Stainless Steel



- **Choose From A Variety of Standard and Custom Finish Colors.**

Our Atlantic Series Doors feature a tough Duranar or clear anodized finish to compliment any color scheme. Standard colors are white or bronze painted and 215 R1-Class 1 clear anodized. Premium colors include: Brick Red, Hartford Green, Beige, Sage Brown, Silversmith and Black. Custom colors are also available. Our PPG Duranar finish meets or exceeds AAMA 2605 finish standards.

- **Choice of Two Different Track Heights.**

EGS has a track to meet any application. We offer our 215 R1-Class 1 clear anodized finish tracks in 3-3/4" and 4-15/16" riser heights to meet various code requirements.



- **Available In Glass Configurations To Meet Large Missile or Small Missile Impact Codes.**

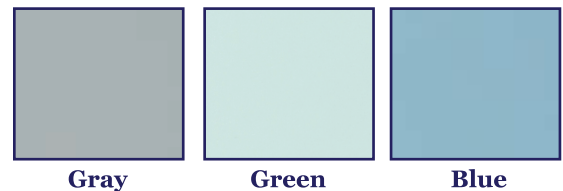
EGS offers our Atlantic Series Sliding Doors in a variety of interlayer glazing and steel reinforcement to meet both the Large Missile and Small Missile Code Requirements. Our laminated glass complies with and exceeds ASTM GANA Guidelines for Laminated Glass Glazing and exceeds ASTM Guidelines for Rollerwave Distortion.

- **Choose From Our Standard Classic Series Hardware.**

EGS offers a Classic Series PVD coated hardware in Bright Brass or Brushed Nickel finishes. With our standard mortised Adams-Rite stainless steel 1847 unit lockset.

- **Available in a Variety of Glazing Styles.**

EGS offers a broad selection of glass options, including standard clear or energy-efficient gray, green, blue & bronze tinted safety-tempered "shutterless" impact-resistant laminated glass.



# Corporate Message



EGS International, LLC has achieved worldwide recognition and acclaim for our superior line of dynamically designed, precisely engineered and meticulously manufactured high performance impact resistant sliding glass doors. Tried and proven through the years, our Atlantic Series Sliding Glass Doors provide building professionals and homeowners alike with state-of-the-art safety and protection against the destructive ravages of mankind and mother nature.

Wherever our Atlantic Series high performance sliding glass doors are specified, our customers can be assured that they have acquired the very best quality door system available at the most competitive pricing possible. As innovators in the state-of-the-art high performance impact resistant sliding glass door systems, our sliding glass doors have been tested to the highest industry standards to provide the ultimate in storm protection for commercial, institutional, multi-family and high-rise complexes.

Built for those who demand the very best, you can be assured that when you specify our Atlantic Series high performance impact resistant sliding glass doors, you get everything you paid for and more. We use only the finest quality materials from nationally recognized suppliers. Our Atlantic Series meets even the toughest industry standards for performance and dependability. And behind every door unit we build, stand the dedicated professionals of EGS International. From our expert designers and engineers to our meticulous mechanics in our manufacturing; from our seasoned sales personnel to our dedicated distributors; EGS is with you every step of the way to assure that you receive excellence in every detail and at every stage of your project. Quality, service and dependability; that's the EGS way.

And our Atlantic Series Sliding Glass Doors offers design flexibility, features and options that add elegance and stature to any project while meeting the needs of your project. Whether you require standard or custom sizes; small missile or large missile code compliance, to meet requirements for high rise or coastal conditions or custom finish options, our experienced team of professionals will gladly provide you with technical consultation at no cost or obligation to review your project needs, provide you timely, accurate estimates and provide on-time delivery schedules. Special orders don't upset us. You can depend on EGS International to help make your selection of the right product for the right application easy and economical.

So why wait any longer? Experience the EGS difference for yourself. For additional information on EGS's Atlantic Series Sliding Glass Doors, list of projects served, view product samples, product specifications or other details; consult your local EGS distributor.

3133 S.W. 25 Street, Pembroke Park, FL 33009  
Telephone : 954/964-1441 Fax : 954/964-1533  
[www.egsinternationalllc.com](http://www.egsinternationalllc.com)



Distributed By:



The Standard of Excellence

3133 S.W. 25 Street  
Pembroke Park, FL 33009  
Telephone : 954/964-1441  
Fax : 954/964-1533  
[www.egsinternationalllc.com](http://www.egsinternationalllc.com)



Made in the USA Using Only the Finest American-Made Componets